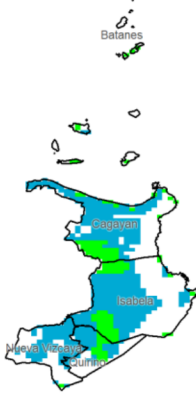


# Region II (Cagayan Valley)

Water Availability for Rice  
Prevailing Stage : (IV) Ripening



Water Availability for Corn  
Prevailing Stage : (I) Establishment



## Provincial Values

Province	Mon. Ave. Rainfall (mm)	Rice CCI (%)				Corn CCI (%)			
		I	II	III	IV	I	II	III	IV
Batanes	633.2	I	132.2	I	261.0	I	287.8	I	506.8
		II	118.6	II	177.3	II	269.3	II	384.5
		III	112.5	III	134.7	III	260.9	III	317.6
		IV	112.5	IV	175.1	IV	260.9	IV	381.0
Cagayan	609.9	I	287.8	I	506.8	I	481.1	I	633.8
		II	269.3	II	384.5	II	474.8	II	597.1
		III	260.9	III	317.6	III	471.9	III	574.6
		IV	260.9	IV	381.0	IV	471.9	IV	595.9
Isabela	408.7	I	481.1	I	633.8	I	646.7	I	925.2
		II	474.8	II	597.1	II	635.2	II	859.2
		III	471.9	III	574.6	III	629.9	III	818.0
		IV	471.9	IV	595.9	IV	629.9	IV	857.1
Nueva Vizcaya	579.2	I	646.7	I	925.2	I	320.3	I	531.1
		II	635.2	II	859.2	II	307.6	II	466.8
		III	629.9	III	818.0	III	301.5	III	427.8
		IV	629.9	IV	857.1	IV	301.5	IV	464.8
Quirino	407.1	I	320.3	I	531.1	I	320.3	I	531.1
		II	307.6	II	466.8	II	307.6	II	466.8
		III	301.5	III	427.8	III	301.5	III	427.8
		IV	301.5	IV	464.8	IV	301.5	IV	464.8

Crop Stage (CS) highlighted in black is the dominant stage during the month of September

Rice CS: (I) Nursery, (II) Vegetative, (III) Reproductive, (IV) Ripening  
Corn CS: (I) Establishment, (II) Vegetative, (III) Reproductive, (IV) Maturity  
CCI Category: Inadequate (yellow), Sufficient (green), Excess (blue)

## Regional Summary

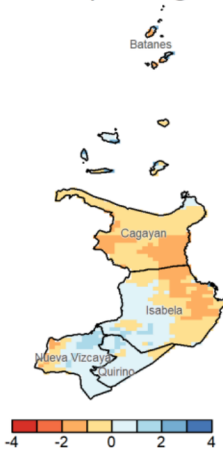
Except for Batanes, the rainfall received for the month was excessive which may have caused potential damage on both rice and corn crops at any of the crop stages in the region. The rainfall for the month was sufficient for rice crops at any stage and corn crops at the non-prevailing stages in Batanes. The SPEI3 suggests near normal condition for the past three months with slightly drier conditions in Cagayan and Isabela, and slightly wetter than normal conditions in some parts of Quirino and Nueva Viscaya.

The extreme rainfall indices shows significant maximum 1-day and 5-day rainfall that could have caused harm on both rice and corn crops. This was associated to the heavy rainfall from the tropical cyclones during the month, especially on the last week of the month when the maximum 1-day and 5-day rainfall was around 100-200mm and 150-350mm due to the passage of STY Julian.

## NDVI

NDVI satellite data not yet available.

## SPEI3 (Jul-Aug-Sep)



## RX1day



## RX5day

